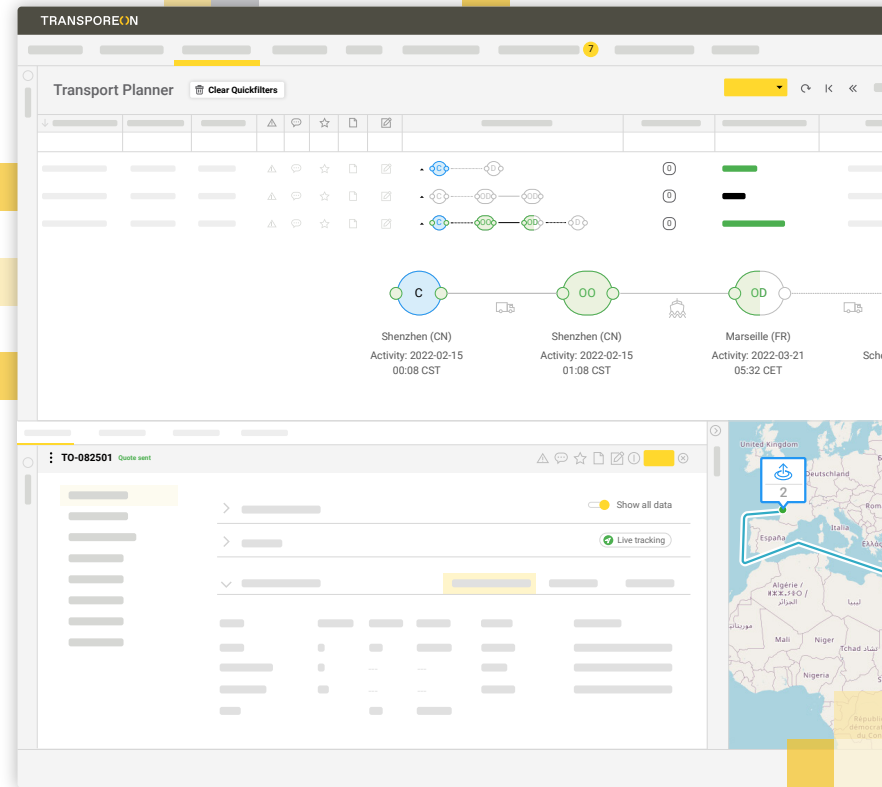


Transport Execution Hub

Transport Operations

Move, manage and monitor freight, in a world in motion

We are living the butterfly effect on supply chain. Global supply chains are heavily interlinked and interdependent that one small change can snowball into many huge impacts. We can see the ripple effects of recent global events which have caused a huge imbalance in demand and supply. Ports are congested. Shipping costs have skyrocketed. So has the competition for reserving market capacity. Never before were shippers constantly struggling to balance the freight costs and carriers to move freight. The key to solving these fierce challenges lies in an agile execution platform and strategy that provides the flexibility needed to adapt to the continuous world in motion.



KEYS TO SUCCESS

COLLABORATIVE

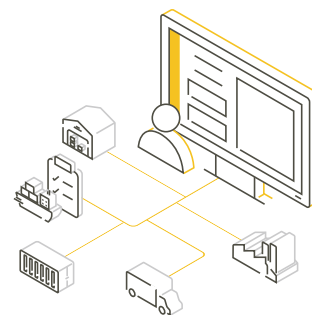
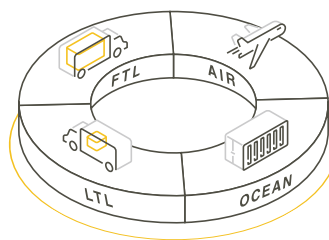
Moving freight is a collaborative effort; make sure everyone is on the same page so all can contribute in keeping the flow of goods moving.

AUTOMATED

Supply chains are run by people, backed by technology. Let technology do the boring stuff so your people can focus on more strategic tasks at hand.

ACTIONABLE

Transportation is a game of exceptions, give your teams the necessary insights to act swiftly before small issues become big problems.



EXECUTE.MONITOR.ACT

360 EXECUTION

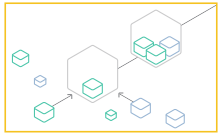
From simple a-b to complex multimodal shipments, and everything in between. Transport Operation is designed in a way that you can manage your complex transportation network with one single interface. FTL, LTL, groupage, intermodal, parcel - or any combination is supported. Save time and reduce mistakes by not having to log in to different systems or manage your parcel flows 'on the side'.

FULL VISIBILITY, TOTAL CONTROL

A transportation plan becomes obsolete the moment you click save. That's the nature of logistics. The future of moving freight is now more than ever characterized by exception, and resilience has moved up the priority list in every board room. And on top of that, customer expectations are sky rocketing. To quote Gartner "The world is moving from 'Just-in-time' to 'Just-The-Customer'". Turbulent times, demanding customers and push for sustainability pushes logistics teams to their limits and requires them to work smarter, not harder. It's time for a new toolset, but also mindset.

TRANSPORT OPERATIONS

Transport Execution Hub is part of Transporeon's Transportation Management Platform. We seamlessly integrate with other Application Hubs, like the Visibility Hub, where we add context, visibility, and predictability into your team's daily operations.



WORK SMARTER, NOT HARDER

Transportation automation is key in running a scalable logistics operation. Switch into data-driven mode and have smart workflows take over the boring repetitive tasks while real-time visibility adds relevant context, so you can meet and exceed customers' expectations.

ALL MODES, ALL COVERED

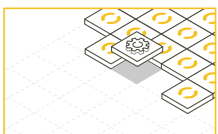
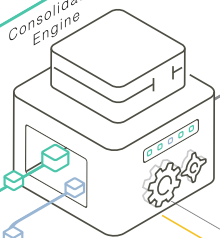
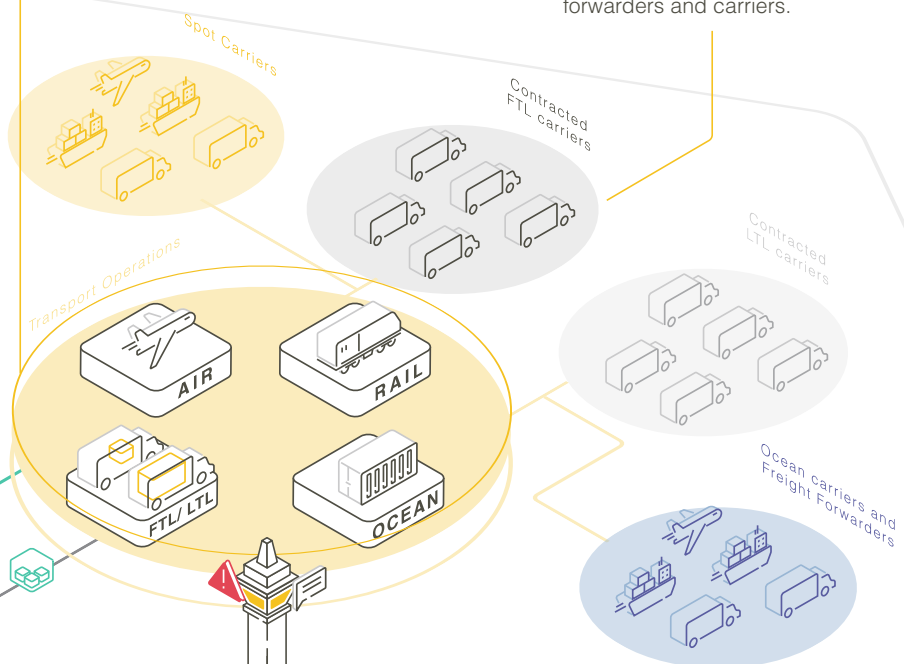
360 Execution covers all your transportation flows, from road FTL, LTL and groupage, to ocean, air and rail. Have smart algorithms do the heavy lifting and put your execution on autopilot.

Because your logistics teams deserve a break.



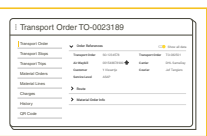
CONNECTED NETWORK

Join the network and have instant access to more than 145,000 forwarders and carriers.



COMPLEMENTS YOUR IT LANDSCAPE

Our ecosystems includes a whole range of connected software partners where we natively integrate with and add immediate value.



DETAILS MATTER

Transportation is just a means to an end, but the actual freight being moved is of true value. Manage, consolidate and track on SKU level your freight.



COMPLEX RATES? SO WHAT.

Rates come in all shapes and sizes. And that's how we like it. With our flexible Rate Management Database, you can accommodate all scenarios, even the exotic ones.